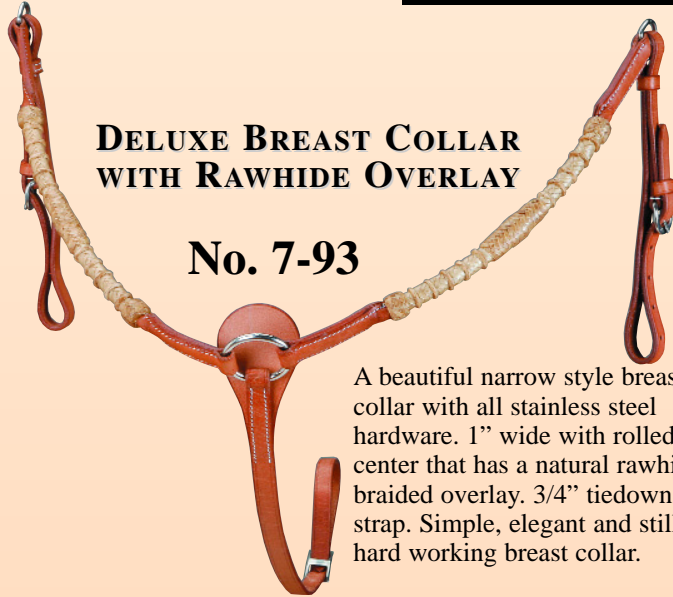


Rawhide Overlay Collection

DELUXE BREAST COLLAR WITH RAWHIDE OVERLAY

No. 7-93

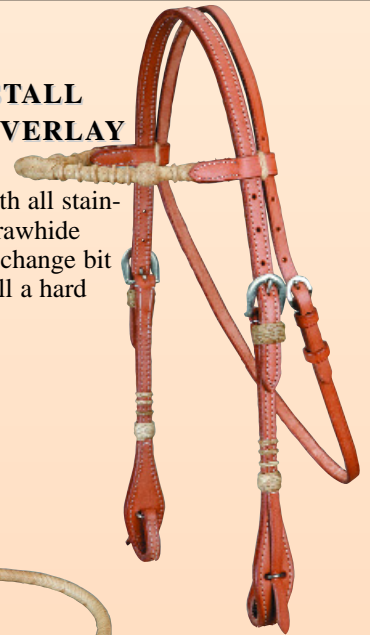
A beautiful narrow style breast collar with all stainless steel hardware. 1" wide with rolled center that has a natural rawhide braided overlay. 3/4" tiedown strap. Simple, elegant and still a hard working breast collar.



DELUXE HEADSTALL WITH RAWHIDE OVERLAY

A beautiful 5/8" headstall with all stainless steel hardware. Natural rawhide braided overlay. Easy, quick change bit ends. Simple, elegant and still a hard working headstall.

No. 5-93



ROUND LEATHER CURB STRAP WITH NATURAL RAWHIDE OVERLAY

High quality round skirting leather curb strap with hand braided natural rawhide overlay.

No. 6-14



DELUXE RAWHIDE OVERLAY ROPER REIN

A great looking 7' x 5/8" rein. Hand braided natural rawhide braided overlay. Stainless steel hardware. Simple, elegant and still a hard working rein.

No. 14-3

Berry Concha Collection

SCALLOPED BREAST COLLAR WITH CONCHAS

A beautiful basket stamped breast collar with stainless steel conchas. 1 3/4" wide with 3/4" tie down strap. All stainless steel hardware. A great looking breast collar at a great price!

No. 7-92



SCALLOPED BROWBAND HEADSTALL WITH CONCHAS

A 5/8", basket stamped, scalloped headstall with all stainless steel hardware and conchas. A great looking headstall with old time cowboy style! This headstall will work wherever it is used, arena, range or trail!

No. 5-92



SCALLOPED CONCHA REINS

Beautiful 5/8" x 7' reins that are basket stamped and have old style, stainless steel berry conchas for true cowboy look.

No. 6-92



