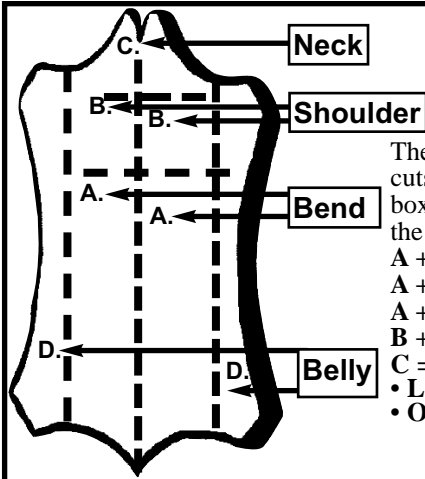


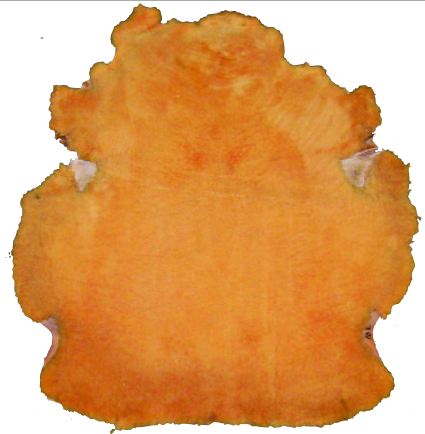
Leather

LEATHER TERMINOLOGY



The above illustration shows the various cuts into which a cattle hide is divided. The boxes to the right give the general terms for the areas.

- A + B + C + D = Side
- A + B + C = Back • A = Bend
- A + A = Double Back • B = Shoulder
- B + B = Double Shoulder
- C = Neck • D = Belly
- Leather is measured in ounces.
- One ounce is equal to 1/64" of thickness.



BARK TANNED WOOLSKINS

Excellent quality. Beautiful golden color. 3/4" wool. Used mainly for lining saddle skirts.

Sold by the Square Foot

No. 12-156 10 Square Feet & Up/Woolskin



HARNESS LEATHER

Quality russet harness leather sides. Not split to uniform thickness. Tanned for endurance in all types of weather. Firm and excellent color.

Sold by the Side

No. 12-57 10 - 12 oz.



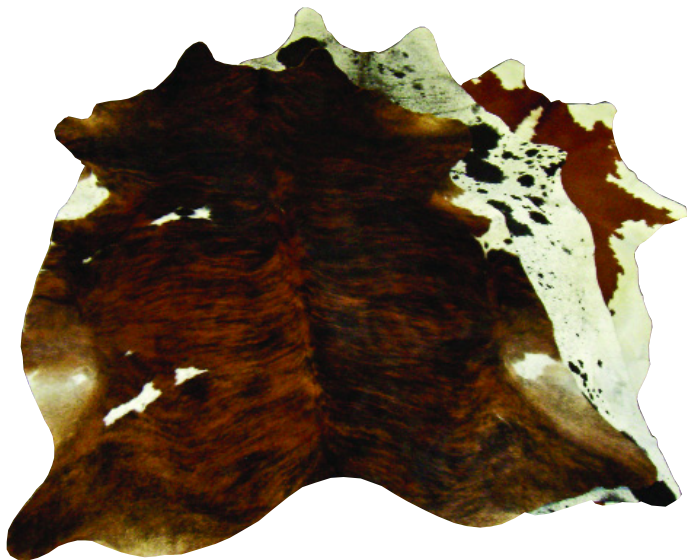
SKIRTING LEATHER

Finest quality skirting sides. Not split to uniform thickness. Used for saddles and tack.

Sold by the Side

No. 12-192 10 - 12 oz.

No. 12-194 13 - 15 oz.



FULL SIZE COW HIDES

Available in: Hereford • Brown & White • Brindles • Black & White. Full size hair on hides are great for rugs, furniture, wall hangings.

No. 12-11 Jumbo
Approximately 35 - 40 square ft/Side



LATIGO LEATHER

Top quality latigo leather sides. Not split to uniform thickness. Used for bridles, reins and strap goods in general. Firm and excellent color.

Sold by the Side

No. 12-120 5 - 6 oz.
Approximately 22 square feet/Side

No. 12-122 10 - 12 oz.
Approximately 22 square ft/Side

RAWHIDE SIDES

Rawhide is cowhide with the hair removed. Stiff as a board when dry, wet it can be cut into horn, front and cantle bindings or swell covers. Can also be cut into strips for braiding.

Sold by the Side

No. 12-150 4 - 5 oz. • Bleached

